

# living things & their habitats

YEAR 4



THE JERSEY  
BAT PROJECT

Hello!  
I'm Hugh



# What is a bat?



Reptile



Fish



Mammal

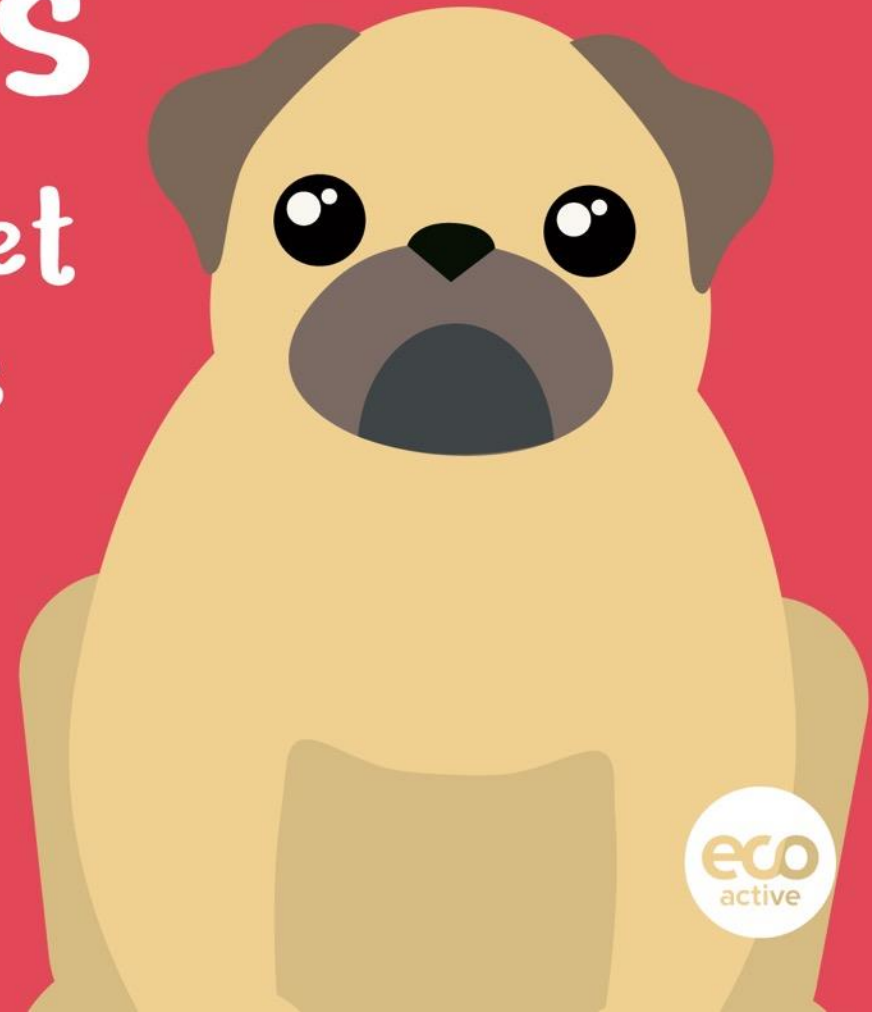


Bird



Amphibian

Bats are  
**mammals**  
just like your pet  
cats and dogs



# Bats through the season



November to  
February

# Hibernating

Bats become torpid (sluggish and cold) in November as they drop their body temperature and begin hibernation.

Bats are hibernating by December to conserve energy in the colder months when insects are hard to find.



March and  
April

# Feeding

Bats are beginning to emerge and can be seen feeding as the weather gets warmer.

Bats are hungry and active, feeding most nights.



May

# Maternity roosts

Female bats are beginning to form maternity colonies and are looking for suitable nursery sites, such as buildings, trees or bat boxes.

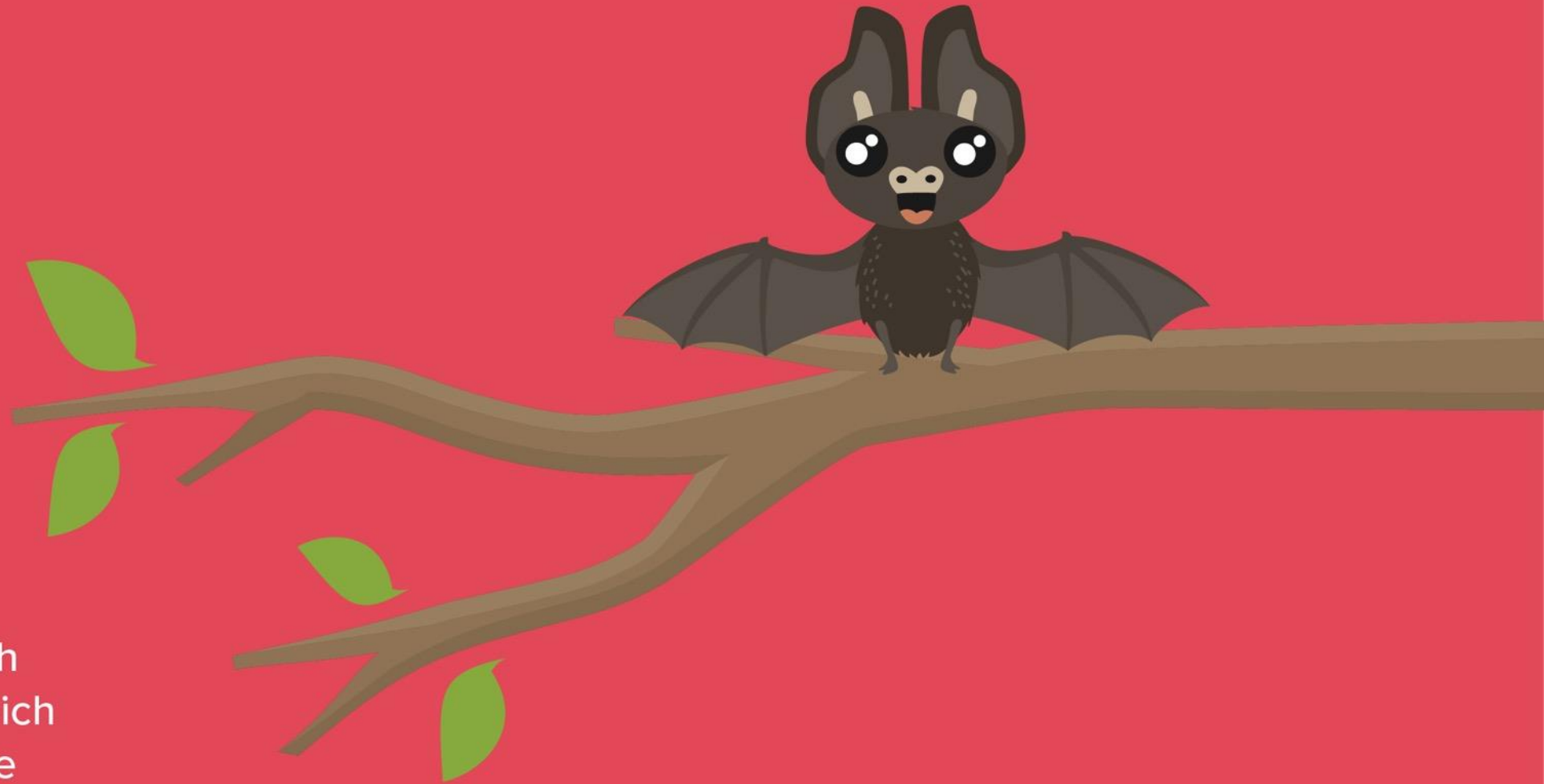




June and  
July

# Birth

Female bats give birth to a single young, which will start to fly at three weeks old.



August to  
October

# Mating and swarming

Mating occurs through  
the autumn and bats can  
often be seen “swarming”  
outside the roost.



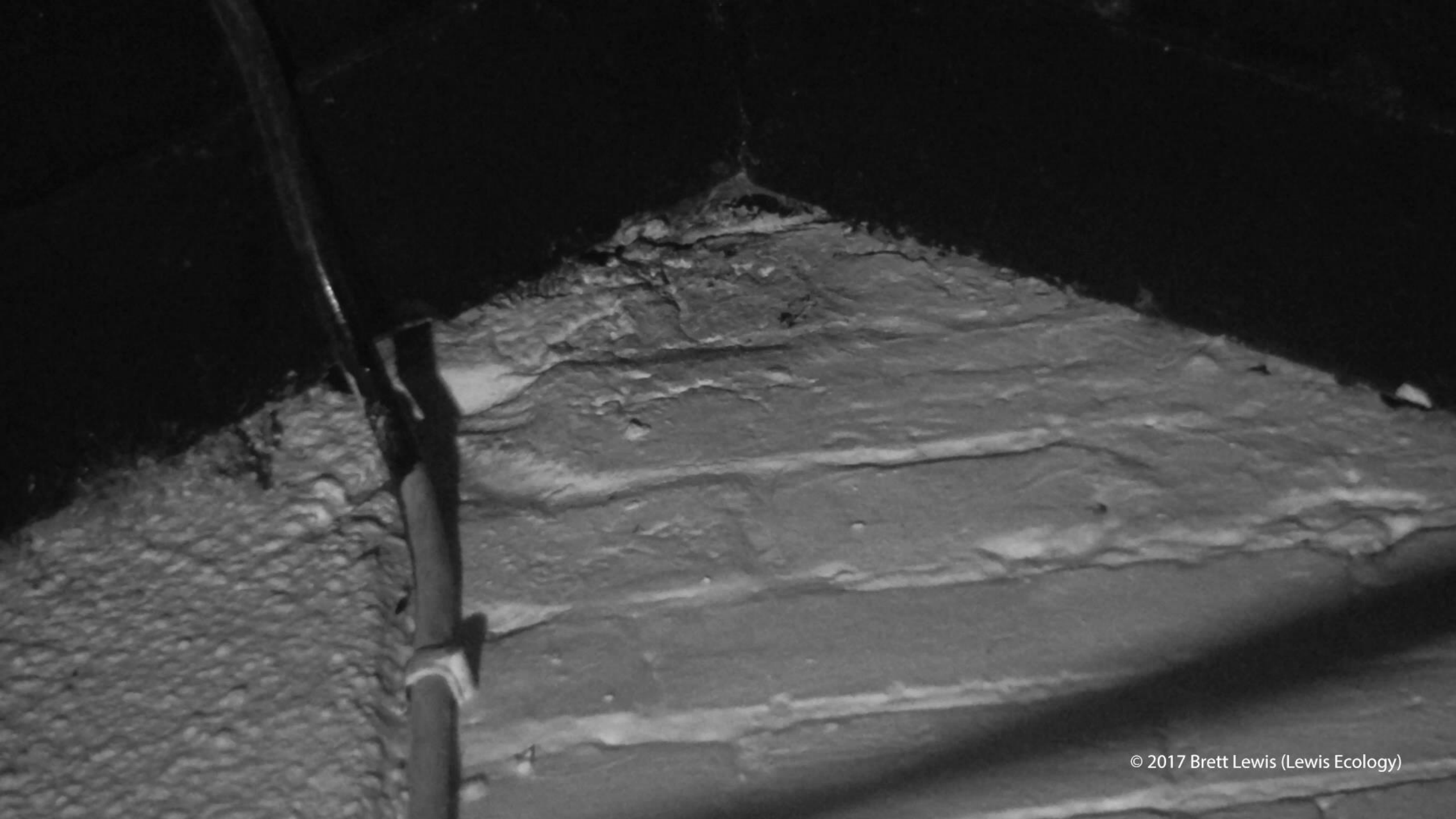
What do bats need?

Bats live in  
**lots of**  
different  
**places**



Z  
Z  
Z

like caves,  
tree holes or an  
attic in a house





The  
importance  
of trees

# TREES



The background of the slide is a solid pink color, decorated with a repeating pattern of light pink footprints scattered across the surface. The text is centered in a white, rounded, sans-serif font.

# looking for suitable bat habitats

Where is the best  
place for a bat roost  
in the school?

**Place photo of school**

We are  
protected  
in Jersey,  
but we still  
need your help.



You could help us by

- planting trees and shrubs
- create a small pond
- make a compost heap or log pile
- put up a bat box



# Science: Living things and their habitats



THE JERSEY  
BAT PROJECT

