

Activity 1

Year 3 Science: animals including humans



THE JERSEY
BAT PROJECT

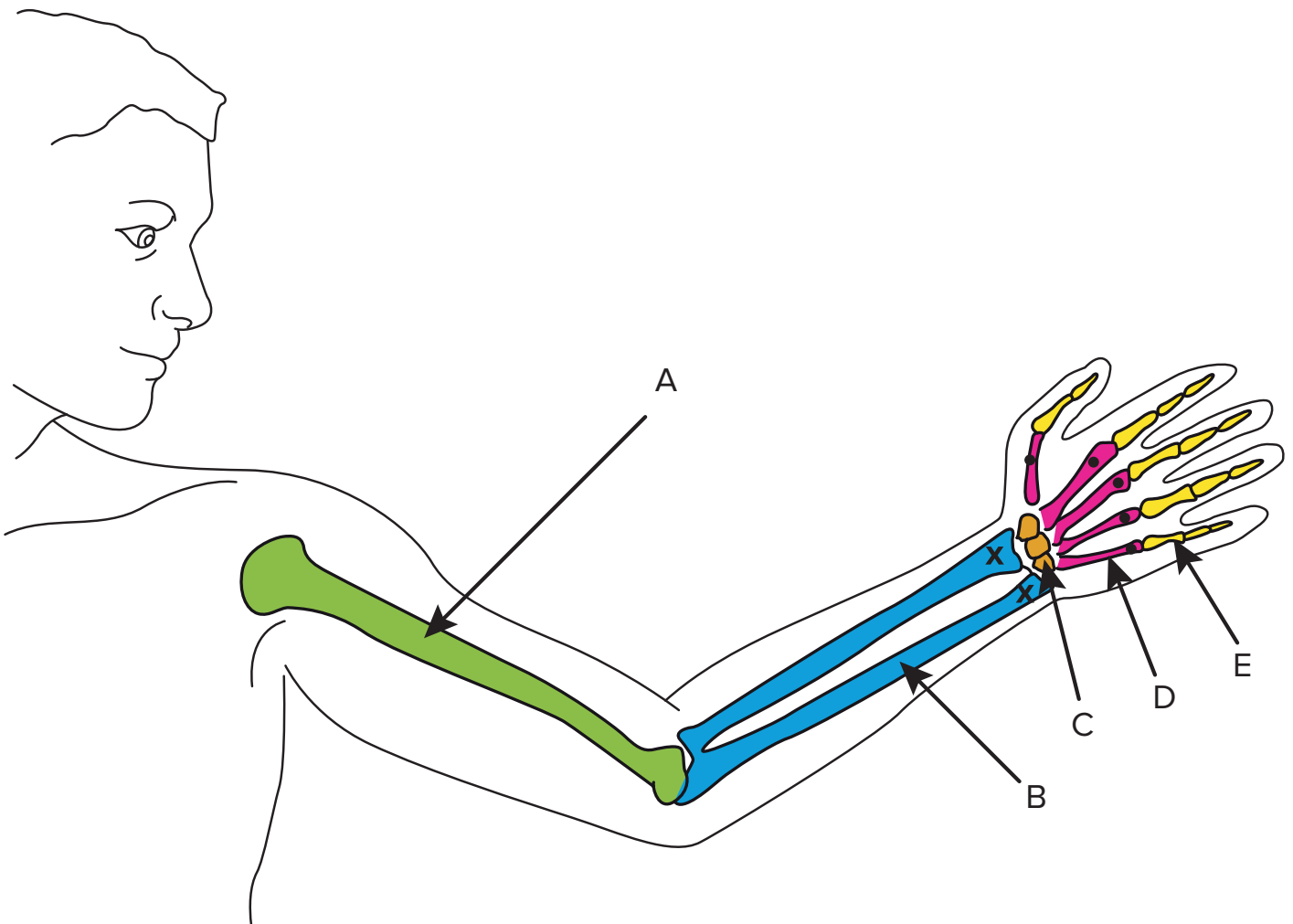
Flight: Wings and Arms

The wings of birds and bats and the arm and the hands of people, evolved from the front limb in different ways

Label these diagrams to show the similarities and differences between ourselves and the others. You can choose 5 different colours and colour the bones in to show the similarities in three animals. We have completed the human for you.

In all three animals, colour:

- A** - Upper arm bone (nearest the body)
- B** - Lower arm bones (marked x)
- C** - Wrist bones (between lower arm and metacarpels)
- D** - Metacarpels (marked •)
- E** - The other finger bones



Activity 1

Year 3 Science: animals including humans



THE JERSEY
BAT PROJECT

**Can you label and / or colour the
bones in the bird and the bat**

